

AIRBEARS

FOR WINDOWS XP WITH SERVICE PACK 2

- Configuring your laptop for wireless Ethernet access



REQUIREMENTS:

- 802.11b based (wireless) Ethernet Adapter
- Wireless adapter must be properly installed
- Valid CalNet Identification (this is your ID number and Bearfacts passphrase)¹
- Windows Service Pack 2 must be installed

SUPPORT:

Student Computer Consulting Service provides walk-in consulting support is available on the first floor of Moffit Library. Normal hours are Monday to Friday, 10am-2pm.

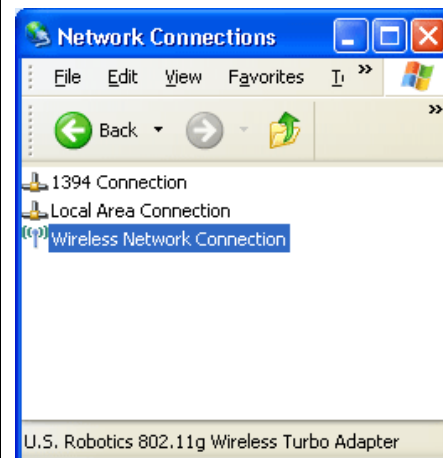
CONFIGURING AIRBEARS:

1. Open Wireless Network Properties:

1. Click on **Start Menu**
2. Click on **Control Panel**
3. Open the icon **Network Connections**
4. Click on **Wireless Network Connection**
(Your actual connection name might be different, click the wireless connection you wish to configure)

NOTE:

If you own a non-Lucent/Dell card or any card that uses its own wireless client utility, please look in your system tray(task bar) on the bottom of the screen for a Wireless Client Utility of some sort to access your wireless network settings



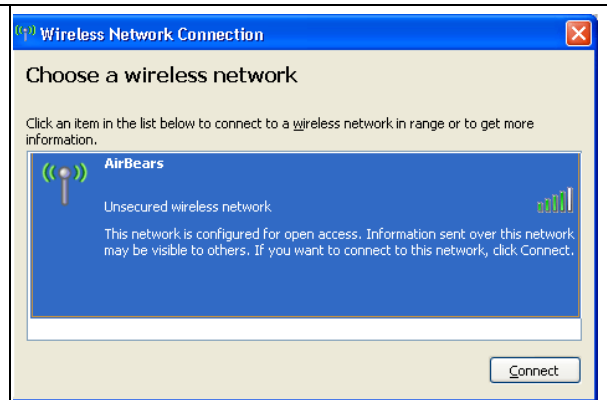
¹ If you have forgotten your passphrase or need a CalNet ID, you must go in person to the User & Account Serviced located in 2195 Hearst, room 111 (open M-F, 10a-4p), and present valid identification, along with your Student or Staff ID to be issued a new passphrase.

2. Connect to the AirBears Network

1. Click on **AirBears**
2. Click **Connect**

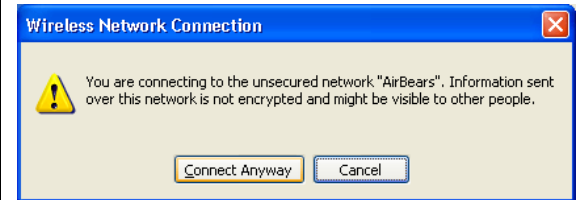
NOTE:

If you're using your wireless card's wireless utility, make sure you connect to AirBears as Infrastructure mode without any data encryption.



3. Accept Security Warning

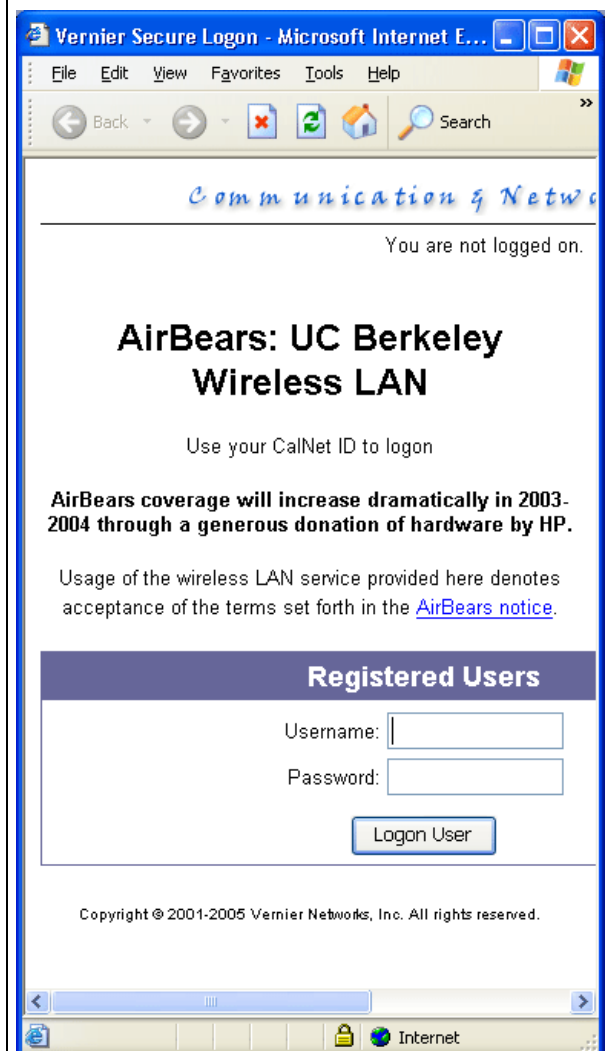
1. If you have not connected to AirBears previously, a security warning will popup. Click **Connect Anyways**
2. Now you should be connected to AirBears



4. CalNet ID Authentication

Before your computer can access the internet, you will need to verify your status as a Berkeley student/staff/faculty member by giving your CalNet ID and passphrase to the Vernier Secure Login.

3. Open any Web browser (Internet Explorer is shown to the right)
4. If you have a homepage setup, your web browser will redirect you to the Vernier Secure Logon site
5. If you do not have a homepage setup, simply attempt to go to any website and you will be redirected to the secure login screen shown on the right.
6. Enter your **CalNet ID** and **pass phrase**. Click **Logon User**.
7. If your password and ID are accepted you will immediately be redirected to the webpage you originally typed into the Address field. Your laptop is now **connected** and **authenticated** to the AirBears wireless network.



NOTE:

Your computer will remain authenticated as long as your computer remains connected to the network. If you disconnect, **your authentication will expire** after a given amount of time (around 30 minutes), and the next time you attempt to use the network you will need to **re-authenticate** by following the steps in this section again.

For example, if you go home, and come back the next day, you will need to re-authenticate

ACCESS LOCATIONS ON CAMPUS:

The following list is not exhaustive.

Please go to <http://airbears.berkeley.edu> for more information on current and future AirBears sites.

- Anthropology Library 230 (Kroeber Hall)
- Barrows Hall, Room 60
- Boalt Law School
- Bioscience & Natural Resources Library (VLSB)
- Cesar E. Chavez Student Center
- Chemistry Library (Hildebrand Hall)
- Doe Annex, Bancroft Reading Room, Stone & Krouzian Rooms
- Doe Library study carrels (selected areas)
- Dwinelle Hall
- Education Psychology Library (Tolman Hall)
- Evans Hall (selected areas)
- Haas Business School (selected areas)
- Hearst Field Annex (selected areas)
- International House, Library, Great Hall and Heller Courtyard
- Kresge Engineering Library (Bechtel Engineering Center)
- Mario Savio Free Speech Movement Cafe (Outside Moffit Library)
- McCone Hall Earth Sciences Library
- Moffit Library, 1st Floor, 450, 450C, 550, and 550C
- Pimental Lecture Hall
- Soda Hall
- South Hall
- Tolman Hall (selected areas)
- Wheeler Auditorium
- Wurster Hall (selected areas)
- Other locations