

AIRBEARS

FOR WINDOWS 98/ME/2000

- Configuring your laptop for wireless Ethernet access



REQUIREMENTS:

- 802.11b based (wireless) Ethernet Adapter
- Wireless adapter must be properly installed
- Valid CalNet Identification (this is your ID number and Bearfacts passphrase)

SUPPORT:

Student Computer Consulting Service provides walk-in consulting support is available on the first floor of Moffit Library. Normal hours are Monday to Friday, 10am-2pm.

CONFIGURING AIRBEARS:

1. Open Wireless Network Properties:

1. Click on Start Menu
2. Select Settings
3. Click on Control Panel
4. Open the icon Wireless Network

If you own a non-Lucent/Dell card, please look in your system tray for a Wireless Client Utility of some sort to access your wireless network settings

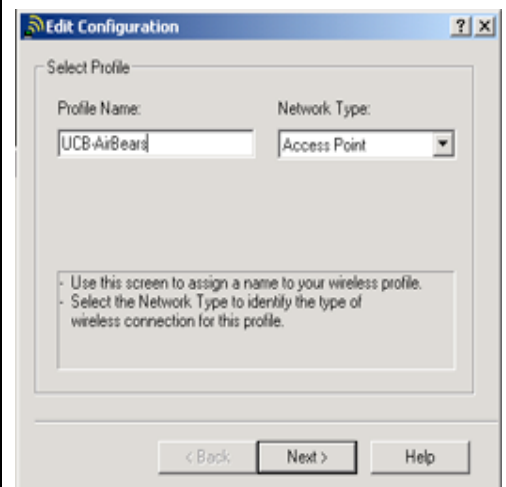


2. Creating a New Wireless Profile

1. After opening the **Wireless Network** control panel, click on **Add** to create a new profile, and then click **Next** to continue
2. Name the profile **UCB-AirBears** and make sure the network type is **Access Point**. Click **Next** to proceed

NOTE:

Older drivers for the Lucent/Dell cards may not have an **Add** option, but instead limit you to four different profiles. In this case, simply select a profile that is not in use and click **Edit Profile** to continue. For non-Lucent/Dell cards, the network type is sometimes called **Infrastructure** (means Access Point)

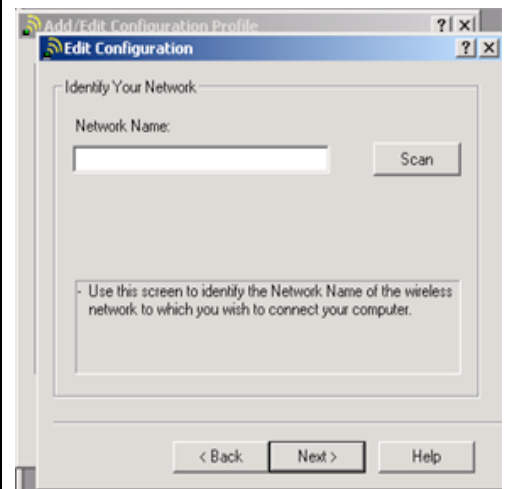


3. Configuring Wireless Profile

1. When prompted to enter a Network Name, leave the field **EMPTY** and press **Next** to proceed

NOTE:

- Sometimes older drivers require that a **Network Name** is entered. This can also occur with non-Lucent/Dell cards
- On non-Lucent/Dell cards, **Network Name** is often listed as a **SSID**
- If you are unable to continue without entering something into the Network Name, please enter **AirBears** and click **Next** to continue

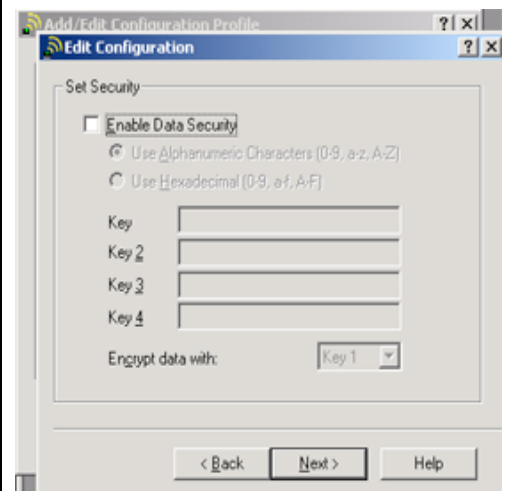


4. Configuring Encryption

1. **Disable** all Data Security (encryption) and do not enter any **security keys**
2. Click **Next** to continue

NOTE:

AirBears uses a web-based authentication system therefore you need to disable the data security system.



5. Miscellaneous Settings

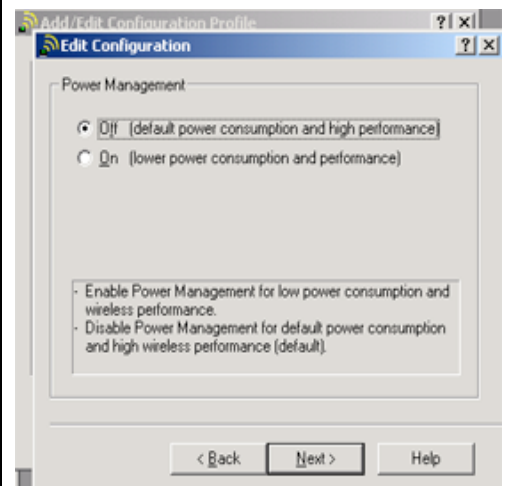
1. **Disable** power management if you wish to gain higher performance from your wireless card.

If your laptop is usually plugged into an AC power source then you should disable power management

2. **Enable** power management if you usually use your laptop off a battery.

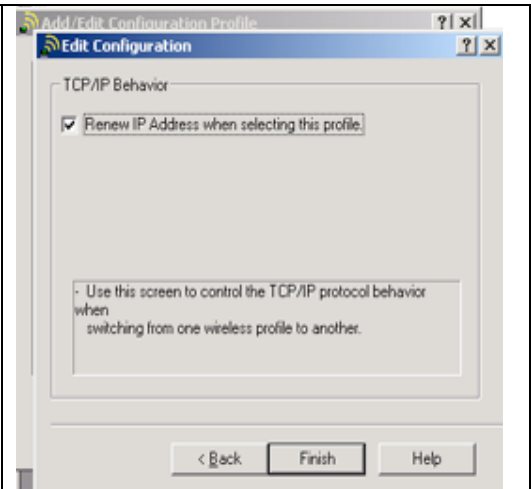
Wireless cards will draw power from your battery. If you find your battery being drained too quickly while using a wireless card, enable on power management

3. Click **Next** to continue, and **Enable** 'Renew IP Address when selecting this profile'
4. Click **Finish** to complete the configuration of your wireless adapter and select the profile you



just created. Click **OK** to enable the profile

5. Your wireless card should now pickup the AirBears network



CalNet ID Authentication

Before your computer can access the internet, you will need to verify your status as a Berkeley student/staff/faculty member by giving your CalNet ID and passphrase to the Vernier Secure Login.

If you are **unable to access the Vernier Secure Logon site**, ensure that the settings you entered above are correct. Also attempt to **manually** enter in a **Network Name (SSID)**—instructions are given in Step 3 of 'Configuring AirBears.'

1. Open any Web browser (Internet Explorer is shown to the right)
2. If you have a homepage setup, your web browser will redirect you to the Vernier Secure Logon site
3. If you do not have a homepage setup, simply attempt to go to any website and you will be redirected to the secure login screen shown on the right.
4. Enter your **CalNet ID** and **pass phrase**. Click **Logon User**.
5. If your password and ID are accepted you will immediately be redirected to the webpage you originally typed into the Address field. Your laptop is now **connected** and **authenticated** to the AirBears wireless network.

NOTE:

Your computer will remain authenticated as long as your computer remains connected to the network. If you disconnect, **your authentication will expire** after a given amount of time (around 30 minutes), and the next time you attempt to use the network you will need to **re-authenticate** by following the steps in this section again.

For example, if you go home, and come back the next day, you will need to re-authenticate

ACCESS LOCATIONS ON CAMPUS:

The following list is not exhaustive.

Please go to <http://airbears.berkeley.edu> for more information on current and future AirBears sites.

- Anthropology Library 230 (Kroeber Hall)
- Barrows Hall, Room 60
- Boalt Law School
- Bioscience & Natural Resources Library (VLSB)
- Cesar E. Chavez Student Center
- Chemistry Library (Hildebrand Hall)

- Doe Annex, Bancroft Reading Room, Stone & Krouzian Rooms
- Doe Library study carrels (selected areas)
- Dwinelle Hall
- Education Psychology Library (Tolman Hall)
- Evans Hall (selected areas)
- Haas Business School (selected areas)
- Hearst Field Annex (selected areas)
- International House, Library, Great Hall and Heller Courtyard
- Kresge Engineering Library (Bechtel Engineering Center)
- Mario Savio Free Speech Movement Cafe (Outside Moffit Library)
- McCone Hall Earth Sciences Library
- Moffit Library, 1st Floor, 450, 450C, 550, and 550C
- Pimental Lecture Hall
- Soda Hall
- South Hall
- Tolman Hall (selected areas)
- Wheeler Auditorium
- Wurster Hall (selected areas)
- Other lo